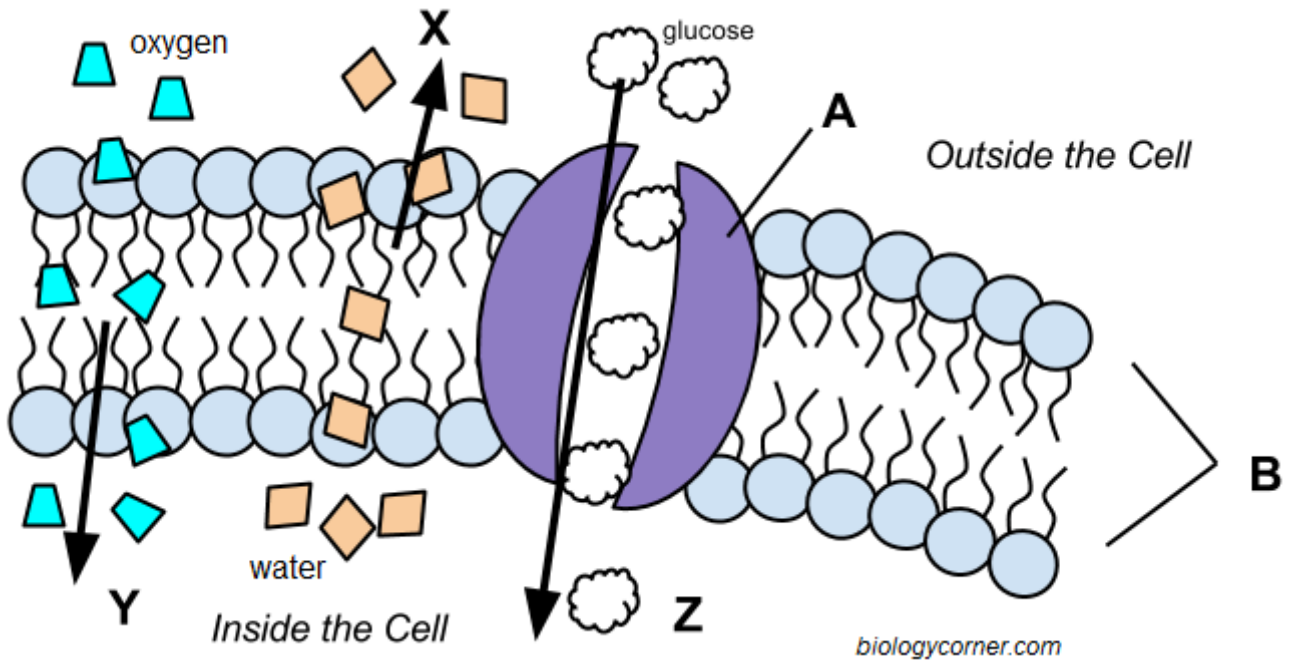


Cell Membrane and Transport Graphic



Match the structure/process to the letter:

1. Phospholipid bilayer _____
2. Osmosis _____
3. Simple Diffusion _____
4. Facilitated Diffusion _____
5. Channel protein _____

6. This cell would be in a [hypertonic / hypotonic / isotonic] solution.
7. All of the processes in the image are examples of [active / passive] transport.
8. The cell membrane can be described as [semi-permeable / impermeable]
9. There is more glucose [inside / outside] the cell. (Hint: Look at the direction it is moving)
10. Water is moving toward the [inside / outside] the cell.
11. Over time, this cell will [shrink / swell]
12. Oxygen [does / does] not require a channel protein to move across the membrane.